

A cultural and culinary landmark, this stately hotel dates back to the 19th century and has played a central role in the life of St Petersburg for over 140 years. Standing along Nevsky Prospekt, it is centrally located facing the Church of the Split Blood, across from the Shostakovich Philharmonic, next to the Russian Museum and within walking distance of the famous Hermitage. With strong ties to the worlds of theatre, music and dance, a stay here will take you straight to the heart of Russia.

ACCOMMODATION

Superior Rooms (88) 247-419 ft² (25-39m²) face the inner courtyard, king or twin beds

Deluxe Rooms (90) 322-398 ft² (30-37m²) views of Mikhailovskaya street and the Philharmonic Hall, king or twin beds

Deluxe with Arts Square View (18) 344-398 ft² (32-37m²) views of Arts Square, Russian Museum, Saviour on Spilled Blood Cathedral

Historic Rooms (6) 355-473 ft² (33-44m²) historic floor, personal butler, king or twin beds, high ceilings

Terrace Rooms (17) 301-322ft² (28-30m²) 5th floor overlooking St. Petersburg's skyline, double rooms, same as above but with beautiful terraces, those facing Arts Square view Church of the Spilt Blood

Junior Suites (13) 430-613 ft² (40-57m²) classical style, average twice the size of Classic Rooms, parquet floors, spacious seating areas, armchairs, sofa, large windows, 3 with twin beds

One-Bedroom Suites (16) 505-785 ft² (47-73m²) Antique furniture, color and style of décor reflecting elegance and dignity of turn-of-the-century Tsarist Russia

Historic One-Bedroom Suites (7) 505-785 ft² (47-73m²) unique historic suites have been opened in the northern wing of the hotel's Historic Floor. Each suite has its own name and the individual interior design

Deluxe Historic One Bedroom Suite (4) 818-1044 ft² (76-97m²) Dramatic high ceilings and beautiful restored historic features characterise the five Deluxe Historic One Bedroom Suites located mainly on the Belle Etage. Each suite has its own name and a corresponding design concept

Avant-Garde Junior Suite (1) 538 ft² (50m²) This elegant one-room junior suite is designed in eclectic style and features parquet floors, rich wool carpet, plush upholstery and two large windows looking

onto historic Nevsky Prospekt and the clock tower of the former City Duma. With its own entry area, it can be used as a second bedroom for Presidential Suite

Avant-Garde Studio Suite (1) 592 ft² (55m²) - **Rodchenko Suite.** Alexander Rodchenko was one of the founders of Russian Constructivism, famous for his innovative advertising and magazine design. His play of geometric forms against a white background influenced the design of this Studio Suite, with its own entry and sitting areas, which can be used as a second bedroom for Suite 157

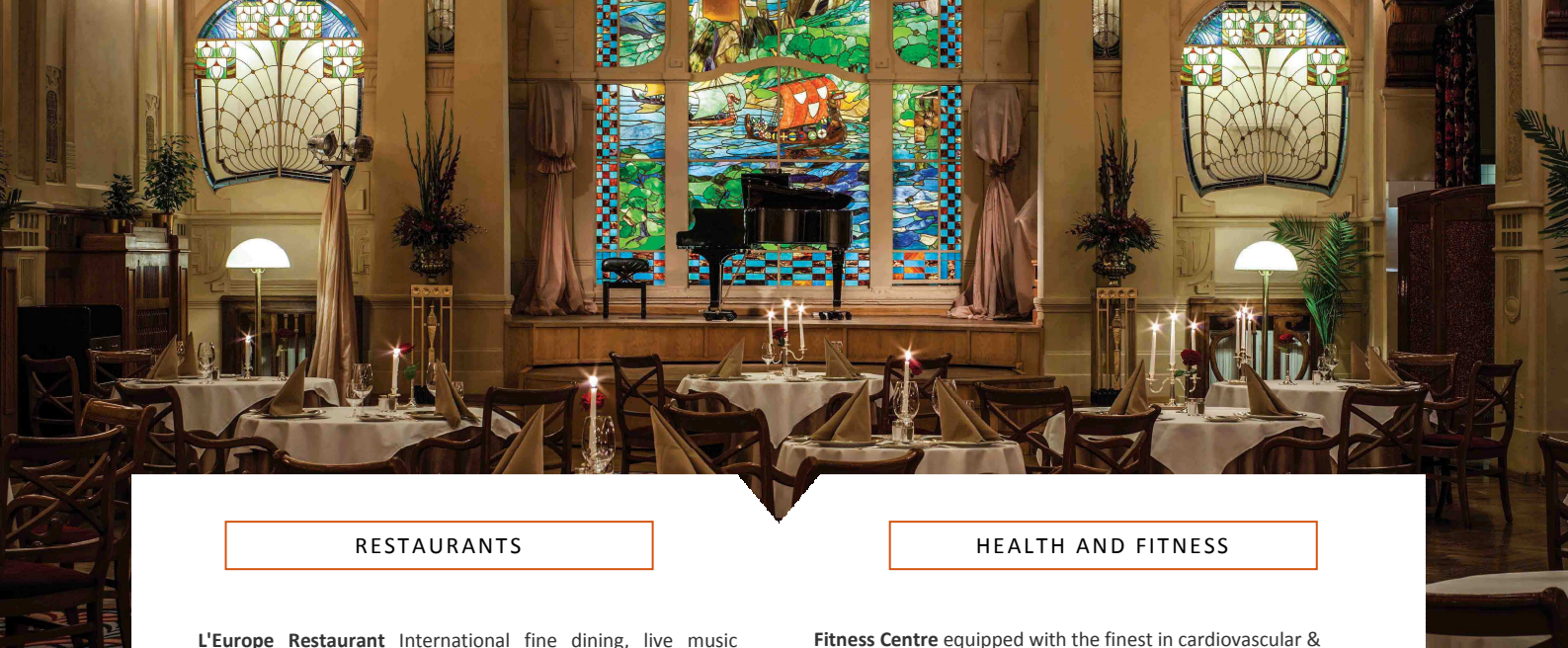
Avant-Garde One Bedroom Suite (1) 990 ft² (92m²) - **Lissitzky Suite.** Artist, designer, photographer, architect, El Lissitzky designed many exhibitions and propaganda for the Soviet Union. His work inspired the graphic lines, bold colour scheme and modern touches of this suite, which can be combined with No. 155 to form a two bedroom suite.

Deluxe Avant-Garde One Bedroom Suite (3) 1345-1829 ft² (125-170m²) - **Malevich Suite, Archipenko Suite, Kandinsky Suite.** The most spacious of all Avant-Garde Suites, these living quarters are facing the quiet Mikhailovskaya Ulitsa. The generous and airy living rooms are ideal for hosting soirées or holding business meetings

Presidential Suite (1) 3,767ft² (350m²) Two-bedroom suite occupying corner of hotel, dining room for 8, fitness center, his & hers bathrooms, music room w/ grand piano, whirlpool bath & personal hammam, game room with billiards table, library & study, king beds, lounge area.

All Accommodations offer: Air-conditioning • Mini-bar • Coffee maker • Satellite TV & DVD • Complimentary Wireless Internet • Desk • Hair Dryer • Bathrobes • Bottled Water • Slippers • Personal safe • Bathroom amenities • Pillow menu • 24 hour Room Service





RESTAURANTS

L'Europe Restaurant International fine dining, live music surrounded by beautiful turn-of-the-century decor
Breakfast 7:00am-10:30am | **Dinner** Monday-Saturday 6:00pm-11:00pm **Sunday Brunch** 1:00pm-4:30pm

Caviar Bar & Restaurant authentic Russian Cuisine, red and black caviar, finest Russian vodkas
Wednesday - Sunday 5:00pm-11:00pm

AZIA Restaurant enticing fusion of Asian cuisines in the heart of St Petersburg
Sunday - Wednesday 12:00pm-12:00am
Thursday - Saturday 12:00pm-1:00am

Mezzanine Cafe A spacious café under a glass roof - ideal venue to enjoy Russian Afternoon Tea and home-made cakes (8:00am-10:00pm, *Afternoon Tea* 2:00pm-6:00pm daily)

Lobby Bar turn-of-the-century grandeur, perfect place to enjoy a drink, appetizer or light snack (Open 24 hours a day)

Grand Terrace light dishes, refreshing cocktails and crisp summer wines, choice selections from the Hotel's other restaurants
May 12:00pm-12:00am | **June-July** 11:00am-2:00am
August-September 11:00am-12:00am

HEALTH AND FITNESS

Fitness Centre equipped with the finest in cardiovascular & resistance machines, sauna & plunge pool (Open 24 hours a day)

Beauty Salon full service beauty salon, offering hair cutting, coloring & styling and a range of spa treatments (9:00am-9:00pm)

HOTEL POLICIES

Check In 2pm • **Check Out** noon • **Cancellation Policy** low season 24 hours / **high season** 72 hours Penalty fluctuates (1 night or more) • **Deposit** None • **Pet Policy** Pets under 3 kilo (6,6lbs) allowed at 1,500 Rubles per night • **Rollaway Beds** 2,500 Rubles per night + VAT Not allowed in Superior & Terrace Rooms • **Child Policy** Max. 1 child, 11 & under, free when sharing parent's room. Breakfast for children 6 & under is free & for children 6-11 at 1280 Rubles • **Early Departure Fee** One night's room rate • **Tax** 18% VAT • **Currency** Russian Ruble • **Voltage** Dual 110/220 **Time Zone** +9 hours (winter) / +8 hour (summer) from New York • **Passport and Visa Requirements** Passport and Russian Visa for US Citizens / 295 Ruble administration fee for visa registration • Hotel provides Visa support letters • **Parking** Complimentary valet & self-parking

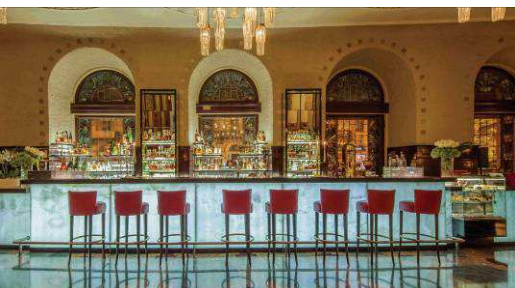
LOCATION

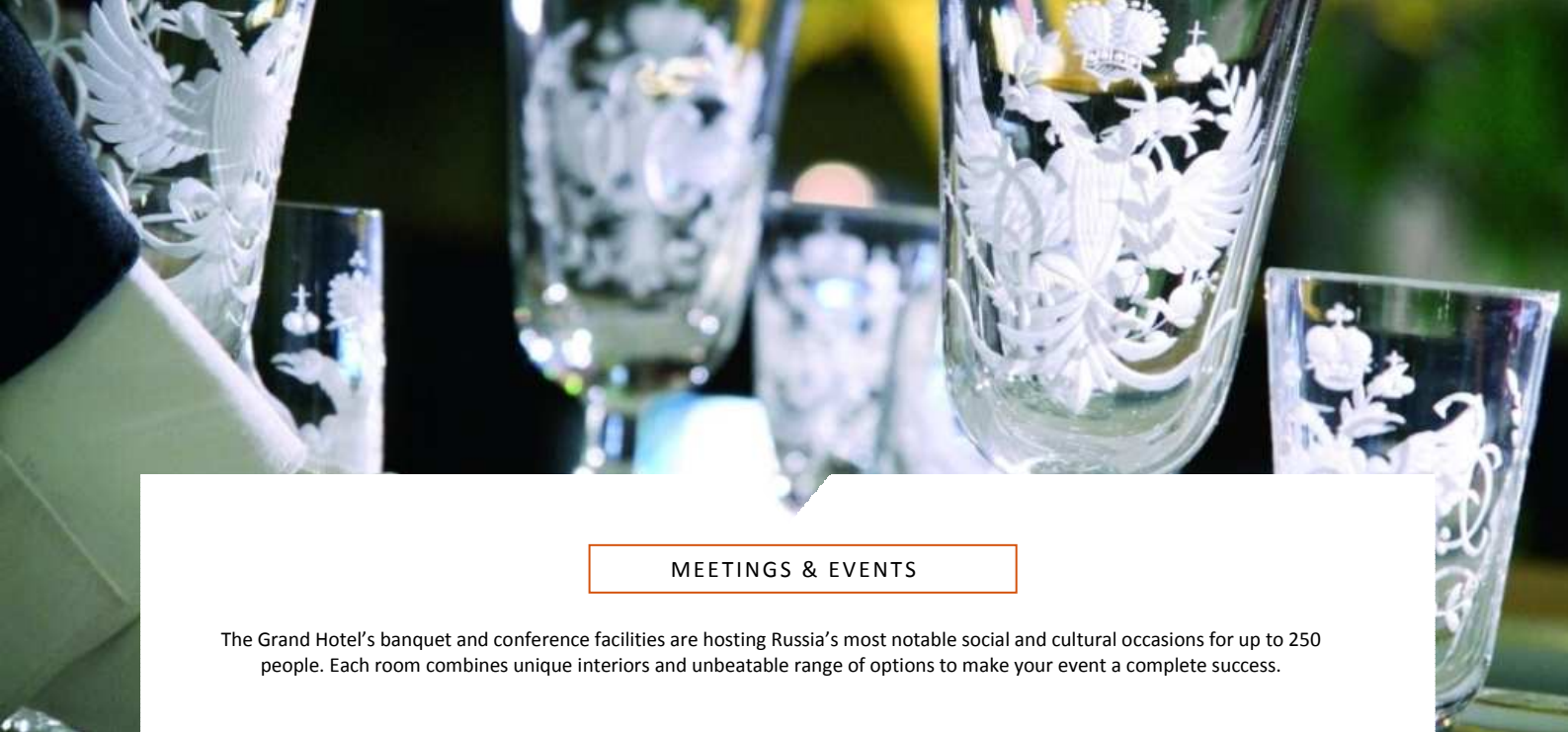


- On the main Avenue in St. Petersburg
- The soaring Onion Domes of the Church of the Savior of Spilt Blood are just around the block from the hotel
- A few minutes walk from the Hermitage Museum and Arts Square
- 35 minutes from Pulkovo airport (LED)

Airport transfers: 5900 rubles per car/one way;
10000 rubles per car/round trip

Train Station Transfers: 3000 rubles per car/one way;
5000 rubles per car/round trip



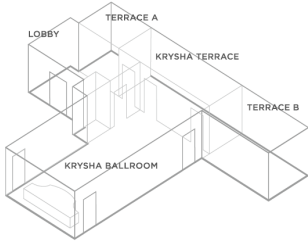


MEETINGS & EVENTS

The Grand Hotel's banquet and conference facilities are hosting Russia's most notable social and cultural occasions for up to 250 people. Each room combines unique interiors and unbeatable range of options to make your event a complete success.

KRYSHA BALLROOM

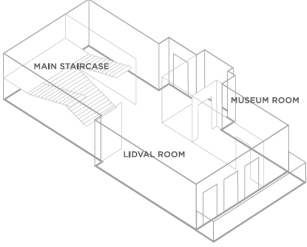
It was Tsar Nicholas II himself who in 1908 presided over the plans to create what is now the celebrated Krysha Ballroom and Terrace atop the hotel. With its stunning stained glass ceiling and sparkling chandeliers it quickly became the most fashionable venue in the city.



| | |
|-------------------------------|-------------------------------|
| Floor space 300m ² | KRYSHA TERRACE |
| Theatre 250 | Floor space 100m ² |
| Classroom 160 | Reception 150 |
| Reception 250 | Banquet 100 |
| Banquet 200 | |

LIDVAL ROOM

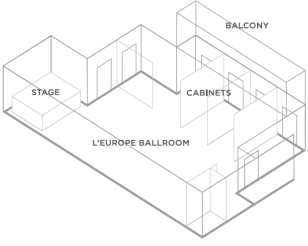
The wood-panelled Billiard Room on the hotel's Historic Floor is an intimate and highly private setting for a business dinner, meeting or party. Exquisite Art Nouveau features are backed up by discreetly-integrated technology including a screen for audio-visual presentations.



| | |
|------------------------------|------------------------------|
| LIDVAL ROOM | MUSEUM ROOM |
| Floor space 60m ² | Floor space 23m ² |
| U-shape 20 | U-shape 20 |
| Reception 40 | Banquet 30 |
| Banquet 30 | |

L'EUROPE BALLROOM

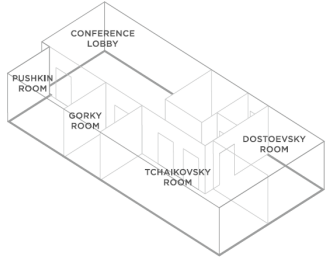
Its uplifting atmosphere makes it ideal for full-scale banquets and dinner dances, while the upper balconies are the perfect setting for private dinner parties.



| | |
|-------------------------------|-------------------------------|
| Floor space 210m ² | BALCONY |
| Reception 300 | Floor space 100m ² |
| Banquet 230 | Reception 50 |
| | Banquet 30 |

CONFERENCE CENTRE

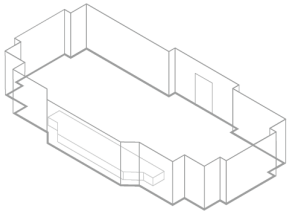
With its own foyer perfect for a reception area and coffee breaks this venue is splendid for meetings, seminars and private functions.



| | | | |
|------------------------------|------------------------------|------------------------------|------------------------------|
| PUSHKIN ROOM | GORKY ROOM | DOSTOEVSKY ROOM | TCHAIKOVSKY ROOM |
| Floor space 48m ² | Floor space 40m ² | Floor space 43m ² | Floor space 94m ² |
| Theatre 32 | Theatre 24 | Theatre 24 | Theatre 80 |
| Classroom 19 | Classroom 17 | Classroom 17 | Classroom 57 |
| U-shape 20 | U-shape 20 | U-shape 50 | U-shape 50 |

BILLIARD ROOM

The wood-panelled Billiard Room on the hotel's Historic Floor is an intimate and highly private setting for a business dinner, meeting or party. Exquisite Art Nouveau features are backed up by discreetly-integrated technology including a screen for audio-visual presentations.



| |
|------------------------------|
| Floor space 56m ² |
| Reception 30 |
| Banquet 20 |

CATERING SERVICES

Belmond Grand Hotel Europe's name is behind some of the most noteworthy events in the St Petersburg social calendar. Known for their originality, style and superb cuisine, these once-in-a-lifetime occasions capture all the romance and elegance of Russia's glorious past. The banquets and formal occasions that we arrange are noted for the highest standards of hospitality and service, the fine cuisine and wine, and entertainment by world-class performers.